

"We respect Dentistry, Dental Technology and Science which makes us stand out from our competition"
Kash Qureshi, Managing Director

IMPORTANT NOTICE

We will be discontinuing our independent service from September 2018. We will still have our high standard NHS, Private and Executive (3 Day service, pre booked), any dockets marked independent after September 2018 will be automatically placed on Private.

With this service being discontinued it allows us to focus more on quality and providing a better service, we now have more products in Orthodontics. Contact us for a new price list with the new orthodontics and digital services.



**My dentist said
I need a crown
I was like
I KNOW, RIGHT?**

Fun Dental Fact:

How your teeth are arranged in your mouth is as unique as your fingerprint — nobody else has a smile like yours!



'TwiNY Hybrid' composite is a 'Light' and 'Heat' cured synthetic resin with 'Ceramic' cluster filler based on the latest 'Nano-Technology'. 'TwiNY' has been examined based on ISO 10993. In addition, it has been thoroughly examined through various safety tests for biocompatibility.

'Hybrid' composites incorporate specially-shaped 'Inorganic Filler' and a 'Ceramic' cluster filler, for excellent 'High Strength', 'Durability' and outstanding 'Aesthetics'.

Studies have shown that composite can have similar 'Longevity' to amalgam restorations but have far 'Superior Aesthetics'. Indirect composite restorations provide a 'High Strength' and 'Durable' restoration whilst maintaining the 'Natural Opalescence' and excellent 'Lifelike Aesthetics'.

Technical Features:

'TwiNY Hybrid Composite' is a biocompatible material based on the 'Nano Filled Technology' with a flexural strength of around 239 mpa. 'TwiNY Hybrid Composite' is constructed in layered stages and cured under a powerful U.V light (Light Cure) and then 'Heat Cured' further in an oven to maximise the ceramic cluster particles to utilise its high strength. All composite restorations can be customised with special effects to optimise translucency and natural life like aesthetics. It is recommended for crowns and bridges, Implant superstructures, inlays and onlays, veneers and temporary crowns.

UDA Demands?

Speak with Kash on how Bremadent can help you and your practice reach their UDA targets, being a full service laboratory, this allows us to accommodate and help your practice reach its full potential!



"The world is facing a new networked, digital lifestyle" and we will ensure that Bremadent remains ahead of the 'Digital Dentistry' game. The aim of 'New Digital Technology' is to provide faster, accurate and consistent results with less variables in 'Everyday Practice' for an 'Integrated Digital Workflow'.

Our new '**Bremadent Digital**' service has the latest 'Digital Equipment' to accommodate 'Digital Dentistry' services from 'Digital Dental Models' to 'Implantology' which are scanned directly from analogue (plaster) models or digitally sent to us from the leading intra-oral scanners from any Dentist around the world instantly (3m, Sirona, Planscan, Trios, Itero, Carestream).

All cases are 'Scanned' and 'Designed' in 3D, which gives accurate and clearly defined parameters with the prepared tooth, margins, contact areas and occlusion captured precisely and locked for the 'Design'. Our technicians will then be able to customise any areas of concern within the parameters and design the restoration with 'Natural Anatomy' from the locked parameters.

A wide range of products is available in 'Crown & Bridge', 'Implantology', 'Prosthetics' and 'Orthodontics' with many restorations being 'CAD/CAM Milled' or '3D printed' once the case has been scanned, designed and approved.

Bremadent 'Digital' is connected directly with Implant systems from Dentsply, Strauman, ETK, Biomet 3, Nobel Biocare, CAMLOG, DIO, Zimmer, Avinent and Atlantis with over 70 implant libraries that allows the Dentist, Dental Laboratory and Implant System to communicate accurately with less variables.

Accuracy of 'Scan':

With our new 'Digital Scanner' we can scan directly from 'Working Models', 'Analogue Implant Impressions', 'Single or Triple Trays' with one scan without the need to introduce variables e.g expansion rates, human error, chipped or broken teeth etc. The Accuracy is ISO 12836 with 'Crown & Bridge' at 5 microns and 'Implants' at 8 microns.

Accuracy of 'Design':

Once digitally scanned, the parameters of the prepared tooth, margins, occlusion is defined clearly and the parameters are locked with any areas of concern, customised within the locked parameters. The restoration can then be designed and altered with our 'Natural Anatomy Library' within the locked parameters.

Accuracy of Milled & 3D Printed restoration:

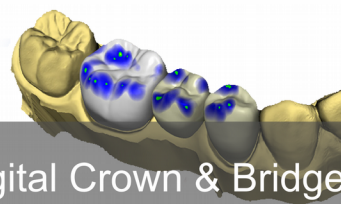
The parameters of the 'Scan & Design' are locked and cannot be altered further, the restoration is then 'Milled' or '3D Printed' from the locked digital parameters. Once the restoration has been made, It is then fitted to a working model and then further on a solid model to minimize variables. The restoration is then 'Quality Controlled' for fit, aesthetics, occlusion, contact areas and margins.

Indications of use (Scan & Designed) :

Anterior or posterior single crowns, full contoured crowns, inlays, onlays, veneers, bridges, abutments, implant bars, surgical guides, digital models, digital waxups, cobalt chrome frameworks and orthodontic retainers.



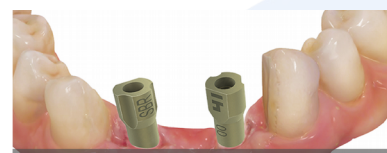
Digital Implantology



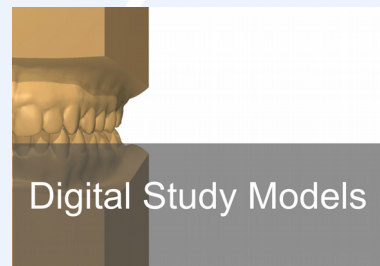
Digital Crown & Bridge



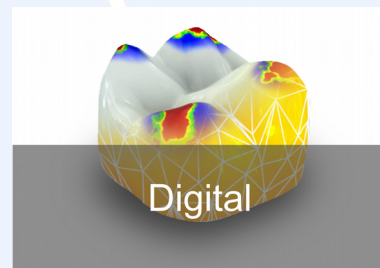
Digital Prosthetics



Digital Impressions



Digital Study Models



Digital



Sports Guard / Gum Shield Colour Chart



Black



Dark Blue



Maroon



Silver



Gold



Royal Blue



Lilac



Sky Blue



Green



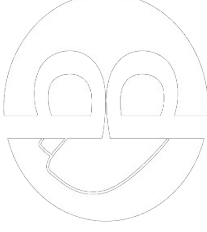
Pink



Red



Turquoise



White



Yellow



Fluorescent Orange



Fluorescent Yellow



Fluorescent Green



Clear



Fluorescent Pink



Racing Green



Brown



Fluorescent Red



Apple



Lavender



Cerise



Sandstone



Cherry Red



Amethyst



Teal



Aussie Yellow



Mint



Shrimp



Mt Green



Cornflower



Leaf Green

KEEP ME AND LAMINATE

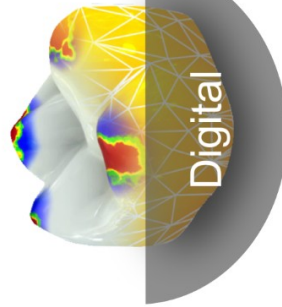
KEEP ME AND LAMINATE



www.bremadent.co.uk



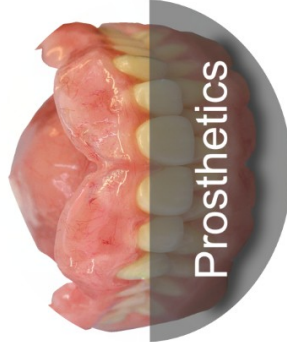
Crown & Bridge



Digital



Implantology



Prosthetics



Pressure Formed