

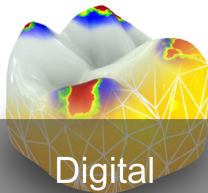
"We respect Dentistry, Dental Technology and Science which makes us stand out from our competition"
Kash Qureshi, Managing Director

Back to life, back to reality....

We hope all of our clients had a wonderful break from 'Dentistry' in the last month, now it's time to increase the 'Private Cases'. We offer a full range of products to help you achieve this, for further information contact Kash to find out more.



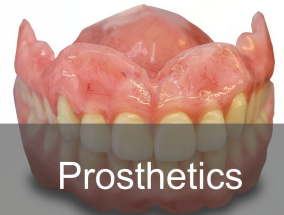
Crown & Bridge



Digital



Implantology



Prosthetics



Hurrimix 2 from Zhermack

At Bremadent, our Managing Director has a very close relationship with Zhermack and has now had a chance to receive a live demonstration on the New 'Hurrimix 2' from Zhermack.

The new 'Hurrimix 2' is an alginate / plaster automatic mixer that mixes a consistent mix in 6 seconds under centrifugal force .

It works via placing the measured scoops of alginate and water into a pot, place the pot inside the chamber, press the button and in 6 seconds a air free, consistent mix is achieved. That simple.

A consistent mix of alginate is achieved in under 6 seconds with centrifugal force inside the 'Hurrimix 2'. The definition of a centrifuge is a machine that uses a force pulling dense objects away from the centre to separate particles or to draw off moisture.

The beautiful part of this machine is that it is clean, accurate and consistent and even a standalone clinician can utilise this. There are various pots with different indicators for sizes of alginate mix to be used e.g 3 scoops etc and you can even mix plaster in the pots, very good for Dental practices who do in-house bleaching trays with pot sizes only range for 100g of plaster enough for two moulds to be poured.

This is very cost effective in reduced material wastage, labour time, working time as most impressions take 1 min and 30 seconds to mix and load the tray, this has achieved this in under 6 seconds, you do the maths. Go to http://en.zhermack.com/Clinical/Equipment/Mixing_machine/HurrimixSup2Sup.kl for further information or search 'Hurrimix 2'.

Need some lab dockets? Download today
at www.bremadent.co.uk/downloads

Fun Dental Fact!!!

If you don't floss, you miss cleaning 40% of your tooth surfaces. Make sure you brush and floss twice a day!

"We respect Dentistry, Dental Technology and Science which makes us stand out from our competition"
Kash Qureshi, Managing Director

Dental Laboratory World!!

A key survey in the Dental Laboratory field has been conducted and has shown key elements that will affect most Dental Practices here is the following break down from the report:

- Smaller dental laboratories are decreasing
- Medium and Larger Laboratories are increasing
- Small labs are on the decline and closing down
- Dental Technicians are not receiving the training
- Skilled Dental Technicians are becoming invaluable

The list goes on, the bottom line is, Bremadent is classed as a larger laboratory and has been established since 1969, we have invested into the latest technology, training and infrastructure to help us achieve our motto of "We respect Dentistry, Dental Technology and Science which makes us stand out from our competition".

Why is my crown not fitting!

The dreaded response when it does not go to plan. Although we do not get this a lot now days, there is a few key elements that need to be followed in a Dental Practice to ensure everyone can safely say "we have followed the guide lines". As technicians we work to what is given to us, we cast models in a controlled environment to make sure expansion rate is controlled and follow manufactures instructions on all materials to allow us to comfortably say "we work to measurements in a quality controlled environment".

Things to consider:

- Check working & setting times of materials
- Is the prep design optimum e.g no under cuts, defined margins etc
- Check if PVS/ Alginate material is compatible with disinfectant
- Stop using triple trays

Triple trays have their benefits, working model, opposing and bite and in an ideal world, but in reality it can cause more issues. A typical example of a triple tray problem is the patients biting through the material onto the mesh, this creates a false representation of the occlusal scheme. e.g the opposing dentition pushes the material out of the way and moulds of the cusps are not picked up as the mesh is an effect acting like the impression material.

There are many factors that could be present, if everyone can comfortably say we are following the rules there will be less variables introduced.

Cheque Please!

Although we would love to support this phrase, Bremadent have now official stopped accepting cheques, please ask for a print of the letter if you have not received one.

Still the 'Gold' standard

www.bremadent.co.uk





'Valplast® Flexible Partials' is the first flexible partial in the world and has over 60+ years of research and development. It is a 'Nylon' based material, which makes it 100% 'Monomer Free', 'Flexible, Thin, Comfortable' and 'Easy To Adapt To' with a life long guarantee. It's routinely used as an alternative to acrylic partial dentures and is used for one tooth partials to 'Hybrid Cobalt Chrome Partials'.

'Valplast® Flexible Partials' have a unique clasping system, the 'Flexible Clasps' are translucent with natural gingival shades and provides 'Retention' and 'Reciprocation'.

The major connector is designed to sit on the cingulum of the anterior teeth and acts like a 'Occusal Rest', there is also relief on areas around the periphery and bony areas and stops adverse pressure on the, gingiva, gingival tissues or periodontum.

Technical Features:

'Valplast® Flexible Partials' are nylon base and 100% monomer free, the major connectors has a uniform thickness of 1.5mm which allows for flexibility. The 'Flexible Clasps' are 1mm above the gingival necks of the clasped teeth for aesthetics with 6 translucent gingival shades available. 'Flexible Clasps' are 1mm interdentally between the adjacent tooth and clasped tooth which provides accurate retention and reciprocation. There is 0.5mm of relief around the periphery, clasps and small connectors. The major connector is design to seat on the cingulum areas and acts like an occusal rest. All 'Valplast® Flexible Partials' and 'Flexible Clasps' are surveyed for path of insertion.

Clinical Features:

'Valplast® Flexible Partials' are easy to adapt to, light weight, thin and flexible which makes them comfortable to wear for the patient. They blend in naturally in the mouth whilst being held firmly and securely with 'Flexible Clasps'. The 'Nylon Material' is flexible and makes the 'Valplast' virtually unbreakable with a 'Life Long Guarantee'.

It is not recommended for complete dentures, gum fitted anterior teeth, over closed OVD (tight occlusion) or small inter-occlusal space.

Contact Bremadent today to discuss your next 'Valplast® Flexible Partials' case.

0208 520 8528

www.bremadent.co.uk
office@bremadent.co.uk

"Bremadent Dental Laboratory proudly introduces 'Swissedent' the all inclusive, private, cosmetic natural looking denture system".

Kash Qureshi MD

What is 'Swissedent Natural Looking' Dentures?

Swissedent 'Natural Looking' Cosmetic Dentures, is a denture system designed for Dentist's to create 'Private' quality dentures with a certified Swissedent Approved Dental Laboratory.

The Swissedent system, utilises the patients facial and smile features, age and gender to produce cosmetic natural looking dentures that restores physical appearance, optimum aesthetics, function and comfort whilst providing a self cleansing hygienic, retentive and stable denture to perfection.

What is the 'Dentogenic' concept?

Swissedent, promotes the 'Dentogenic' concept to allow Dentist's to work in harmony with the patients objective personality, which implies anterior teeth are aesthetically positioned to compliment the patients facial characteristics, smile line, age and gender, by allowing natural light to brighten and darken certain anterior teeth, as with natural teeth. The 'Dentogenic' concept also generates the gingival components of the denture by determining the gingival line, contour, zenith, height and symmetry to create unique smile characteristics.

With the help of the 'Dentogenic' concept there are four distinctive anterior styles, masculine, feminine, universal and irregular that is arranged within the parameters of the patients unique 'Dentogenic' concept. The shape and mould of tooth is chosen via the same 'Dentogenic' concept to create a natural look, unique to the individual.

How is denture hygiene achieved?

'Swissedent Dentures' not only provides aesthetics, it promotes hygiene. The root contour, inter-dental areas and gingival necks are created convexly to prevent food traps with added support from stippling to provide a self cleansing hygienic denture.

How is the physical appearance and function restored?

Physical appearance is easily restored with 'Swissedent' as the smooth root contours of the denture are rolled towards the periphery, convexly constructed with prominent canine roots that work in harmony with the 'Dentogenic' parameters, facial muscles and the soft tissues to provide adequate tissue support. With all of the factors incorporated, this provides the basis for function with balanced occlusion to maximise stability and chewing efficiency. *Find out more 0208 520 8528 ask for Kash.*



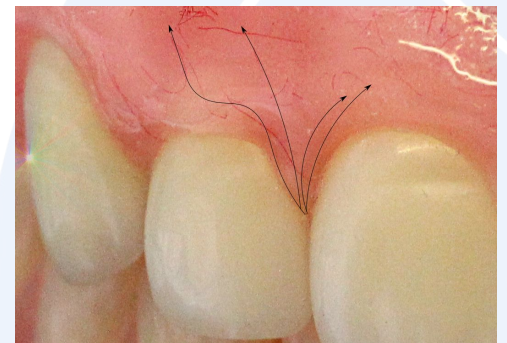
Masculine



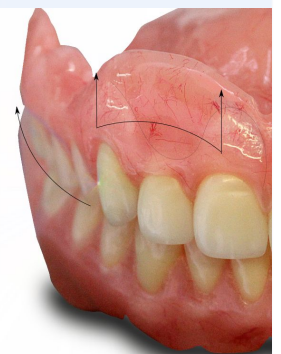
Irregular



Feminine



Convex Interdental areas



Function & physical appearance

As Featured in:



nature.com

Dentistry

