

0208 520 8528
www.bremadent.co.uk
office@bremadent.co.uk



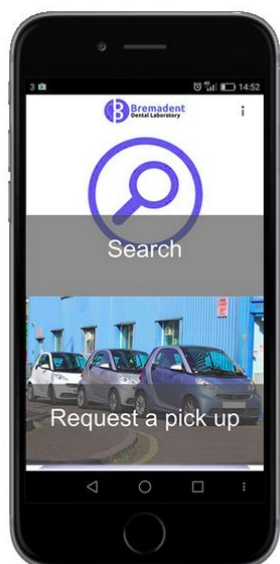
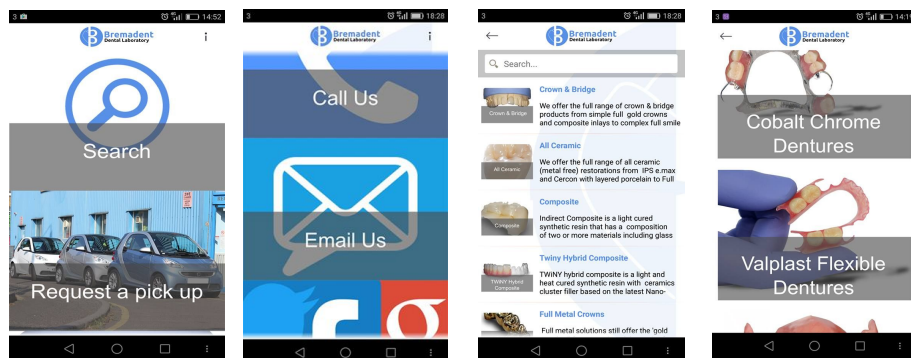
"We respect Dentistry, Dental Technology and Science which makes us stand out from our competition"
Kash Qureshi, Managing Director

"Our Dental Laboratory in your hands 24/7, 365 Days a week!"

The Bremadent Dental Laboratory app puts our Dental Laboratory in your hands 24/7, 365 days a year. Within a second, via our optimized search engine you can search our entire content (including images) and receive instant information on our dental laboratory products, special offers, services, latest news & products to support and assist you chair side with your patients.

Features:

- Login via a valid email or facebook / google + account.
- Search our entire content via our optimized search engine within a second.
- Email, call or request a pick up within seconds.
- Receive instant up-to date information on special offers new products & latest news.
- View all of our laboratory products, services in detail with images and clinical indications.
- Content is synced with our website and automatically updates.



Search our whole website within a second

A new addition to our website is the ability to search our entire website within a second via our custom search engine through our website or our own mobile app. You'll find this on the top of every page of our website and for instant access on our mobile app.

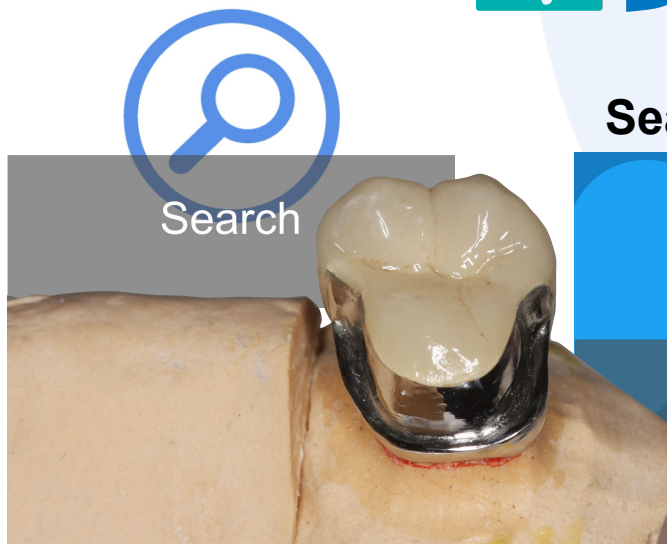
www.bremadent.co.uk/app
www.bremadent.co.uk/search



Search Bremadent

Download our **NEW!** app today!

SEARCH: BREMADENT

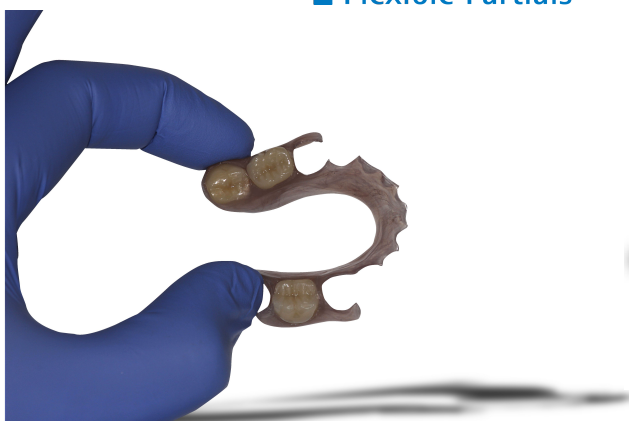


0208 520 8528
www.bremadent.co.uk
office@bremadent.co.uk

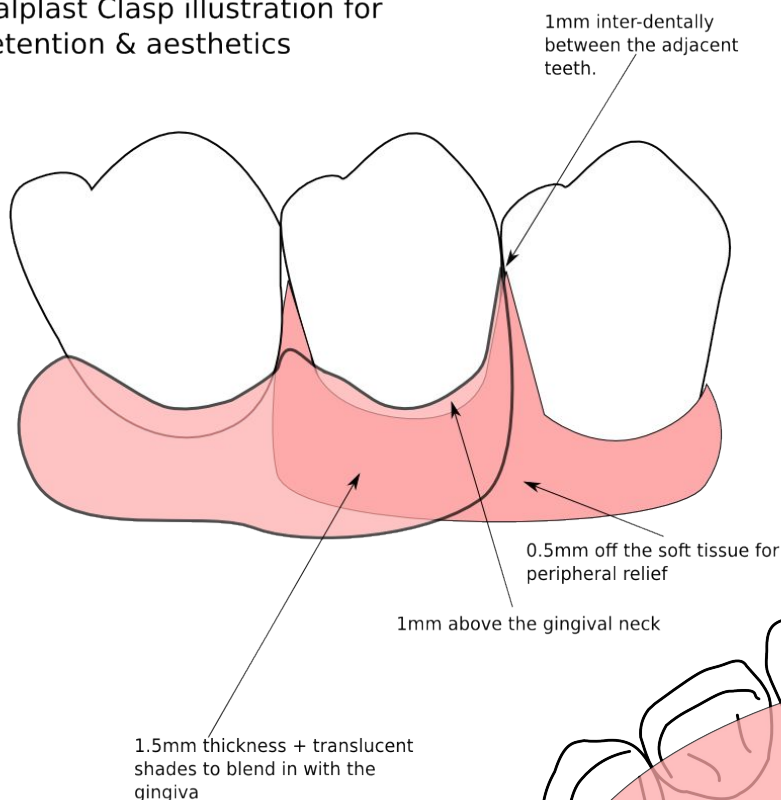


Bremadent
Dental Laboratory

"We respect Dentistry, Dental Technology and Science which makes us stand out from our competition"
Kash Qureshi, Managing Director

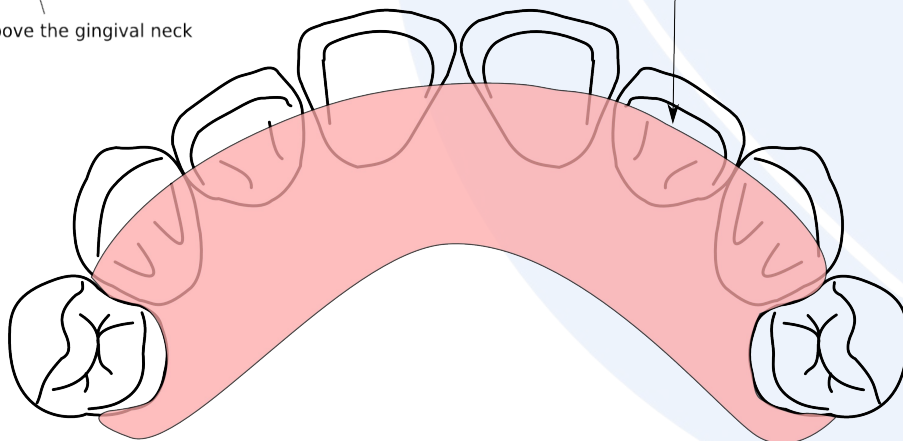


Valplast Clasp illustration for retention & aesthetics



See our illustration's that shows you what makes a Valplast, a retentive cost effective solution that is kind to the soft tissues and gingiva. All Valplast are designed in this way to provide retention & aesthetics.

Valplast is designed to seat on top of the cingulum areas.



**Get a Valplast
today !!!
0208 520 8528**



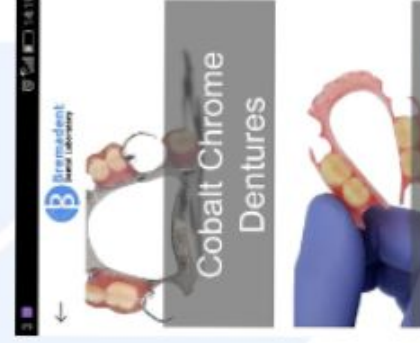
"Our Dental Laboratory in your hands 24/7, 365 days a year."

Kash Qureshi MD



Download our **NEW!** app today!

Screenshot:



SEARCH: BREMADENT



"We respect Dentistry, Dental Technology and Science which makes us stand out from our competition"
Kash Qureshi, Managing Director

Introducing Twiny the new Hybrid Composite

TwINY hybrid composite is a light and heat cured synthetic resin with ceramics cluster filler based on the latest Nano-technology. TwiNY has been examined based on ISO 10993. In addition, it has been thoroughly examined through various safety tests for biocompatibility.

Hybrid composites incorporate specially-shaped inorganic filler and a ceramics cluster filler, for excellent high strength, durability and outstanding aesthetics.

Studies have shown that composite can have similar longevity to amalgam restorations but have far superior aesthetics. Indirect composite restorations provide a high strength and durable restoration whilst maintaining the natural opalescence and excellent lifelike aesthetics.

Technical Features:

Twiny hybrid composite is a biocompatible material based on the nano filled technology with a flexural strength of around 239 mpa. Twiny hybrid composite is constructed in layered stages and cured under a powerful U.V light (Light Cure) and then heat cured further in an oven to maximise the ceramic cluster particles to utilise it's high strength . All composite restorations can be customised with special effects to optimise translucency and natural life like aesthetics. It is recommended for crowns and bridges, Implant superstructures, inlays and onlays, veneers and temporary crowns.



*Find out the latest
news. Search
Bremadent on the
app store or google
play.*

www.bremadent.co.uk/crown--bridge



News