

"We respect Dentistry, Dental Technology and Science which makes us stand out from our competition"  
*Kash Qureshi, Managing Director*

## Dental Lab Newsletter / March 2018

### Size matters....

Upon our latest research and development project in 'Crown & Bridge' we have stumbled across 'Film Thickness' of 'Dental Cements'. There are four different classifications of dental cements:

- Phosphate (Zinc Phosphate) ,
- Polycarboxylate (Zinc Polycarboxylate, Glass Ionomer)
- Phenolate (Zinc oxide–eugenol)
- Resin (Polymeric)

Why would a 'Dental Laboratory' be looking into 'Dental Cements' you ask? Simple, this affects us in manufacturing fixed restorations and is a crucial clinical aspect that all 'Dental Labs' need to know.

Upon research, many of the film thickness of dental cements vary between microns (25µm – 50µm). Film thickness is dependent on what type of cement, viscosity and prep design.

After casting models in crown & bridge, we analyse & prepare the dies and apply die spacer. Die spacer imitates the layer of dental cement and provides space between the crown and underlying tooth preparation. This space allows a thin coat of cement to flow between the crown and the tooth so the crown can fully seat.

Die spacer is usually between 10 – 20 microns in film thickness and usually is applied in multiple coats as a paint on material. This allows us to mimic the film thickness of the most popular cement from the lab side, but what happens when the film thickness in the die spacer is less than that of the dental cement? You guessed it, does not fit in the mouth but fits on the model.

Conclusion: That one bit of information that does not get communicated can be costly, both financially and in time, remember size matters in Dentistry.

<https://www.bremadent.co.uk/crown--bridge>

### Fun Dental Fact:

Only 6% of adults have no natural teeth. In 1978, the figure was as high as 37% in the UK.



### MHRA Update: Bremadent Dental Laboratory

We are proud to announce that we have now migrated to the MHRA online services for Device Registrations and our information as a 'Dental Manufacture' is available online.

The Medicines and Healthcare products Regulatory Agency (MHRA) regulates medicines, medical devices and blood components for transfusion in the UK.

MHRA is an executive agency, sponsored by the Department of Health and Social Care.

We have been registered since: 25/08/99



"PAINLESS EXTRACTION."

# D.A.M.A.S 2018 Update: Bremadent Dental Laboratory

We are currently in the process of our D.A.M.A.S audit for 2018. We will confirm further once we have received our certificate.

## What is a DAMAS Dental Laboratory?

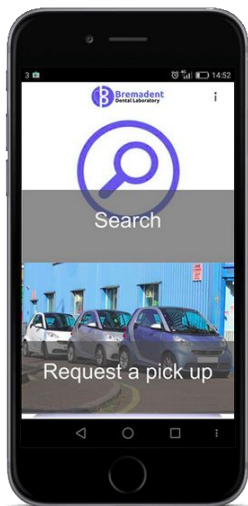
DAMAS is the 'Dental Appliance Manufacturers Audit Scheme'. It is a quality management system designed specifically for the manufacturers of custom made dental appliances.

DAMAS is the most commonly used annually inspected quality system within the dental laboratory industry that provides a framework for an effective quality management system which enables dental laboratories to prove to their clients that they are operating within the law (Medical Devices Regulations MDR).

DAMAS is more than just a quality control mechanism. It encompasses control beyond just inspection and testing and requires a structured approach to prevention of quality problems through planned activities that include reviews, monitoring and documentation.

DAMAS provides laboratories with a set of processes that ensure a common sense approach to the management of the organisation. The system ensures consistency and improvement of working practices, which in turn should provide products and services that meet customer's requirements.

Bremadent Premier (Bristol) LTD is an Accredited DAMAS Dental Laboratory.



Download our **NEW!** app today!

SEARCH: BREMADENT



## **NEW!** Full Contoured Zirconia Crowns

We are proud to announce that we will now be offering CAD/CAM Milled Full contoured solid Zirconia crowns in traditional Vita & bleach shades which can be used for crowns, bridges, veneers, inlays/ onlays and screw retained implants crowns .

This is a cost effective solution to Full Metal / Gold Crowns as there is no alloy charge and is tooth coloured restoration that is ideal for bruxists due to its high flexural strength (650 -1200 mpa) and little inter occlusal space (0.6mm minimum) whilst maintaining minimal wear on opposing dentition.

GO TO [www.bremadent.co.uk/full-zirconia](http://www.bremadent.co.uk/full-zirconia) OR SPEAK TO KASH FOR PRICES AND TURN AROUND TIMES



[www.bremadent.co.uk](http://www.bremadent.co.uk)



[office@bremadent.co.uk](mailto:office@bremadent.co.uk)



0208 520 8528





## Accurately place a implant & temporary crown in the same day with Bremadent!

'Immediate Temporary Implant Crowns' allows the Dentist to remove a non restorable tooth and immediately place an implant and load the implant with a temporary implant crown within the same day. The 'Temporary Implant Crown' is designed to act as a surgical guide, location jig and temporary crown to allow the Dentist to offer 'Immediate Loading' successfully.



## What is a 'Kois Deprogrammer'?

'Kois Deprogrammers' are used as a diagnostic tool for evaluating patients with occlusal dysfunction, this can cause problems with mastication, facial and joint pain which can lead to worn, broken, loose teeth with frequent chipping due to abnormal occlusal attrition.

A 'Kois Deprogrammer' is a removable, acrylic device that covers the palatal aspect of the maxilla and creates a single point of contact between the anterior bite platform and the lower central incisor. This is used to evaluate the patients bite and assist Dentist's in trying to locate a patient's optimal jaw position or distinguish between the three types of abnormal occlusal attrition – Constricted Path of Closure (PCP), Occlusal Dysfunction and Parafunction (bruxism).

'Kois Deprogrammers' work when the lower central incisors is in contact with the upper anterior bite plane which prevents the mandible and maxilla from occluding thus gradually relaxing the mandible into an ideal position. This causes the lateral pterygoid muscles to relax and allows the TMJ to seat in its most comfortable and natural position as it removes occlusal interferences and habitual functional movements the patient has developed to avoid pain.

Patients may be asked to wear this device for a period of one week to one month to to make sure old muscle memory has been erased (deprogrammed). Signs of successful deprogramming is when the patient has a reproducible bite without assistance as per contact whilst wearing the 'Kois Deprogrammer'.



Dysfunction of the TMJ? Want to control 'Bruxism' and 'Parafunctional' habits. Give your patients a 'Michigan or Tanner splint' contact Bremadent and ask for Kash for more info.



We manufacture

**IPS e.max**



Michigan Splints



[www.bremadent.co.uk](http://www.bremadent.co.uk)



[office@bremadent.co.uk](mailto:office@bremadent.co.uk)



0208 520 8528

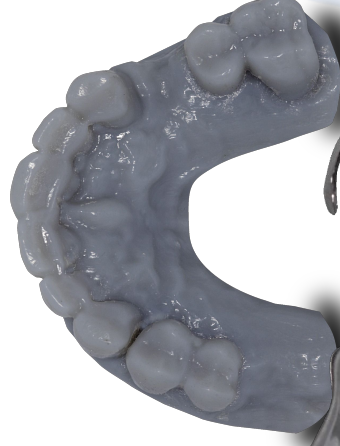
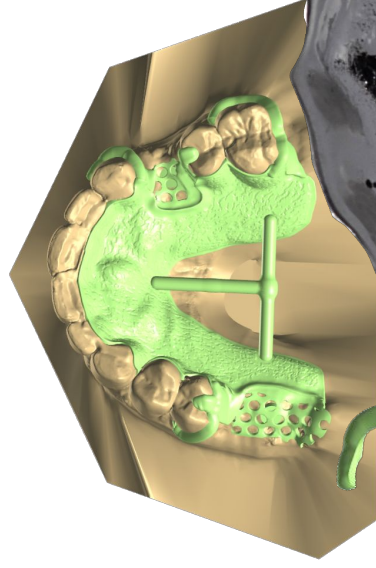
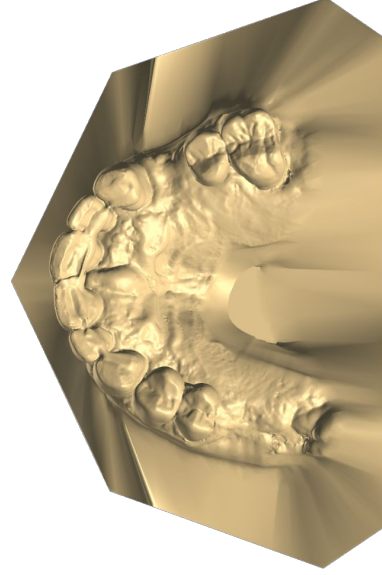


Scan

Design

Print

Manufacture



[www.bremadent.co.uk/digital](http://www.bremadent.co.uk/digital)