

"We respect Dentistry, Dental Technology and Science which makes us stand out from our competition"
Kash Qureshi, Managing Director

Updated 'Privacy Policy' available online

We are proud to announce that 'Bremadent Dental Laboratory' are compliant with GDPR that is affecting every business across the UK on the 25th of May 2018. It will be illegal to use a company that does not abide by the new Data Protection Act 2018 and the company could face prosecution or fines. We have updated our Data Protection Policy in line with the GDPR and have registered as an ICO data controller and data processor.

View our privacy policy online:
www.bremadent.co.uk/privacy-policy

What is a 'Hybrid Chrome'?

'Hybrid Chrome Partials' is a 'New' combination of 'Removable Partials' that incorporates the accuracy, strength and durability of 'Cobalt Chrome' and the inconspicuous aesthetics and flexibility of 'Valplast® Flexible Clasps' and is used as an alternative for acrylic partial dentures and 'Cobalt Chrome Dentures' where 'Aesthetics' is optimum and no metal clasps should be visible. Contact Kash for further information

When you want everyone to know that you're a wealthy dentist



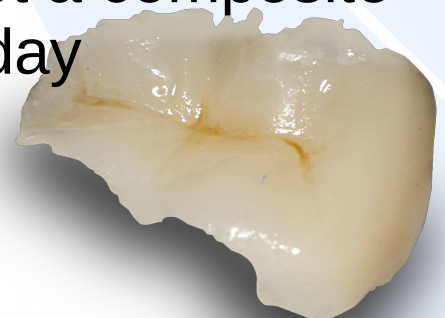
Fun Dental Fact:

An obscure law in Vermont states that it is illegal for women to wear false teeth without the written permission of their husband.



'Full Contoured Zirconia Crowns' are digitally scanned and cad-cam milled and provides less variables and accurate results. Used as an alternative to full metal crowns and is cost effective with no alloy charge. **£90.00**

Get a composite today



Full Zirconia



Anterior open bite on dentures?

There is nothing more annoying in removable prosthetics than going through all of the crucial stages and finding on the trial stage, AOB (anterior open bite) is present, you may consider this a wasted appointment, but remember there is always a solution to a problem.

Firstly check the anterior aesthetics of the maxillary denture, if this is acceptable to you and your patient, then proceed. Then use a 'Willis Gauge' to check the OVD in comparison between the old dentures and trial dentures, this will give you a good indication if you need to increase or decrease the ovd and check the 'Free Way Space'.

Free way space (FWS) is dictated by the overall vertical dimension (OVD) and resting vertical dimension (RVD) and provides the distance between the maxilla and mandible at physiologic rest position which is usually between 2 – 4 mm.

When the freeway space is decreased, it causes the posterior teeth to overcompensate and causes the patient to occlude posteriorly to compensate for the loss of FWS and creates the AOB.

OVD, RVD and FWS should be checked in the bite registration stage in comparison to the patients old dentures and at the try- stage, this process can take a few minutes.

Solution for AOB:

Simply remove the mandibular posterior teeth on each side and record a new a jaw registration with wax or bite reg paste with the correct OVD and the posterior teeth will be reset to compensate.

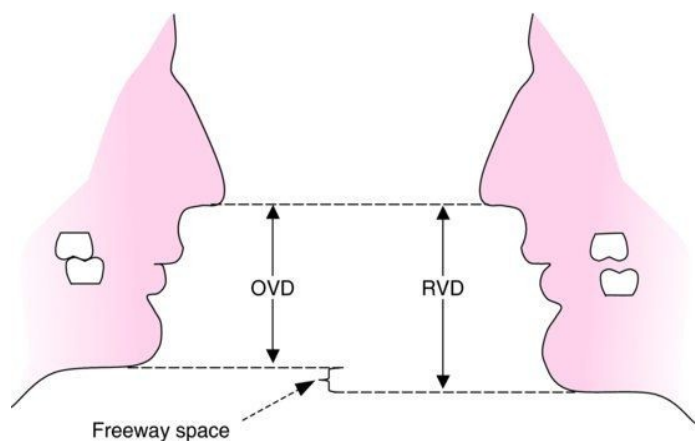
FWS is correct but there is still an AOB present:

The mandibular anterior teeth have been set too low and will need to be placed higher. Simply take another bite registration posteriorly without removing teeth or place some wax to the mandibular anterior teeth to indicate the level of how high you would like the teeth to be placed.

Example of FWS:

e.g OVD= 45mm RVD=47mm, $OVD - RVD = 2\text{mm}$ of free way space.

$RVD - OVD = \text{FWS}$



Need help on Dentures?

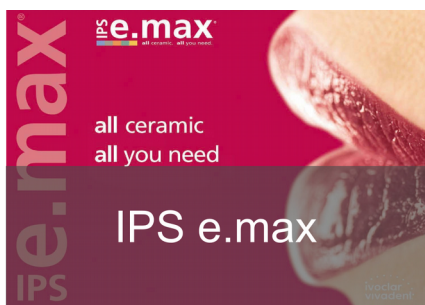


Go to www.bremadent.co.uk/clinical-guides for a range of guides to help you out, including denture bite registrations.

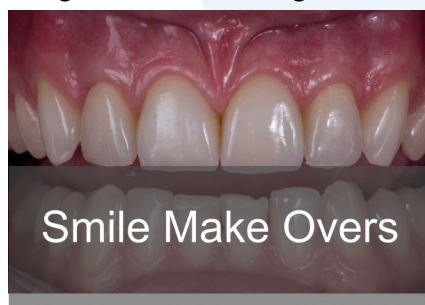
Why not try our:



Full Zirconia



IPS e.max



Smile Make Overs



www.bremadent.co.uk



office@bremadent.co.uk



0208 520 8528



How do I sell Valplast? What can I say?

Which are common questions that get asked about Valplast, here is some key information:

- Easy to adapt to
- Light weight, thin & flexible
- Comfortable to wear
- Blends in naturally with the mouth
- Virtual Unbreakable
- Accurately fitting & Retentive
- Life long guarantee
- Quality controlled



Click below to download the full Valplast for Dentists guide!



All Ceramic Table - Emax vs Zirconia ? Clinical Indications

All Ceramic	Flexural Strength	Clinical Indications	Aesthetics or Function
Lithium Disilicate IPS e.max	360 MPa to 400 MPa	Inlays, onlays, 3/4 crowns, single unit crowns, short span FPD's in anterior and premolar region, implant abutments.	Aesthetics
Zirconia Cercon	900 MPa - 1,200 MPa	Single unit anterior crowns, single unit posterior crowns, Large span anterior and posterior bridges, implant abutments, crowns & bridges.	Function
Alumina In-ceram Alumina Procera	450 MPa 600 MPa	Single unit crowns. Single unit crowns, anterior bridges.	Aesthetics
Leucite IPS empress	160 MPa	Veneers, inlays, onlays, 3/4 crowns, single unit crowns.	Aesthetics & Function



Swissedent
Natural Looking Dentures



Swissedent Natural Looking Dentures, 'All Inclusive Private Dentures' at Bremadent



www.bremadent.co.uk



office@bremadent.co.uk



0208 520 8528



IPS e.max®



What is IPS e.max?

IPS e.max® is a Lithium Disilicate glass all-ceramic that delivers optimum aesthetics, translucency, durability and strength. With up to 10 years of clinical evidence, over 80 million restorations and a 97.6% survival rate, it is a proven system that provides highly durable and highly aesthetic restorations which makes it an affordable alternative to porcelain bonded crowns and zirconia based restorations.

Technical Features:

IPS e.max can either be pressed or milled via our in-house Sirona inLab CAD/CAM milling machine and provides a flexural strength between 360 – 500 Mpa. It is recommended for single unit anterior crowns or posterior crowns, 3 unit anterior bridges, partial and full anatomical crowns, minimal veneers (from 0.3mm), inlays & onlays and screw retained implant crowns.

Clinical Features:

IPS e.max is a bio-compatible material and is used for highly aesthetic solutions due to its true to nature shade behaviour. IPS e.max promotes durable restoration due to the high flexural strength and is suitable with minimal invasive preparations. There is no condensation shrinkage thus providing a precise fit and reduce adjustment time. IPS e.max restorations offer flexible cementation. *Contact Kash on 0208 520 8528 for further information.*

Before



After



www.bremadent.co.uk



office@bremadent.co.uk



0208 520 8528

