

0208 520 8528
www.bremadent.co.uk
office@bremadent.co.uk



"We respect Dentistry, Dental Technology and Science which makes us stand out from our competition"
Kash Qureshi, Managing Director

Straumann Platinum Accredited

We are pleased to announced that Glen Weiner has successfully completed this course to become a Straumann Platinum Accredited Technician and has given us our Platinum approved status as a Dental Laboratory, this allows glen to extensively help with all implantology. www.bremadent.co.uk/implantology



**Platinum Approved
by Straumann**

Fun Dental Fact!!!!

Tooth decay is the second most common disease after a cold and we produce 100, 000 gallons of saliva in a lifetime which helps prevent tooth decay by moving food away from the teeth!!!



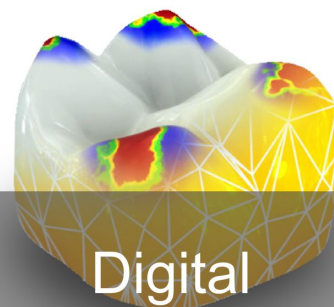
**Cobalt Chrome
Dentures**

Still No.1

www.bremadent.co.uk/prosthetics

Dentures problems?

Turn over for a Bremadent solution



Bremadent 'Digital'

Check out our new section online with all things related to 'Digital Dentistry' with sections in digital impressions, digital study models, digital crown & bridge, digital implantology and digital prosthetics. www.bremadent.co.uk/digital

Dental Laboratory Newsletter!!

We have successfully published our dental laboratory newsletter since last year 2016, how many dental laboratories do you know like to keep you informed of what there laboratory is up to, with the latest technology, information and helpful hints and guides.

Anterior over bite on dentures?

There is nothing more annoying in removable prosthetics than going through all of the crucial stages and finding on the trial stage, aob is present, you may consider this a wasted appointment but remember, there is always a solution to a problem.

Firstly check the anterior aesthetics of the maxillary denture, if this is acceptable to you and your patient, then proceed. Then with use of a 'Willis Gauge' check the freeway space, when there is little freeway space, it causes the posterior teeth to overcompensate and causes the patient to occlude posteriorly to compensate for the loss of fws.

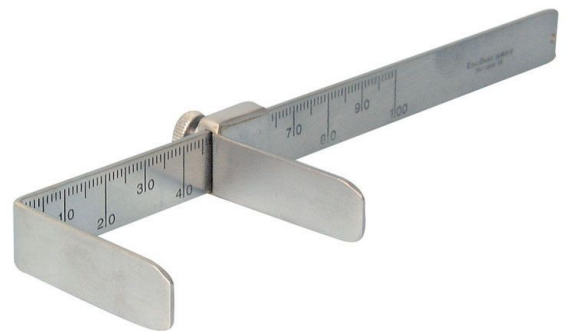
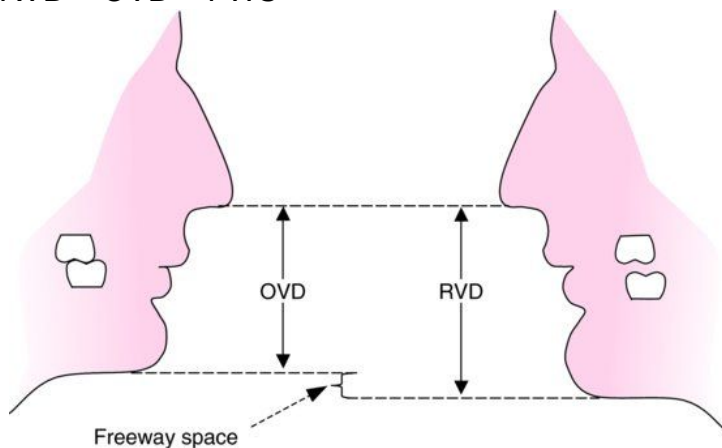
If the freeway space is the cause, simply remove the mandibular posterior teeth on each side record and a new a jaw registration should be recorded with wax or a bite reg paste with the correct fws.

If this is not the case and the fws is correct but there is still an aob, the mandibular anterior teeth have been set too low and will need to be placed higher. Simply place some wax to the anterior teeth to indicate the level of how high you would like the teeth to be placed.

Free way space should be checked in the bite registration stage against the patients old dentures and at the try- stage. Free way space is dictated by the overall vertical dimension and resting vertical dimension and provides the distance between the maxilla and mandible at physiologic rest position.

e.g OVD= 45mm RVD=47mm, $OVD - RVD = 2\text{mm}$ of free way space.

$RVD - OVD = FWS$



Interesting Fact!!!!

According to the theory of Dr. Willis, the corner of the eye to the corner of the mouth has the same measurement in distance as underneath the nose to the underneath of the chin .

**Continued in next months newsletter,
how to resolve more denture
problems.**



Needs Your Help!!!

As our valued customers, we need your help. If you're happy with our 'Dental Laboratory', we need you to tell everyone in the form of a review. A few sentences speaks a thousand words.

We are looking for reviews on our 'Dental Laboratory' on either our Facebook or preferably our Google page.

Please search 'Bremadent' on Google or Facebook to write a review.

Helpful tips on what to write, taken from published reviews:

- | | |
|--|---|
| <ul style="list-style-type: none">• Service• Quality of work• Customer care• Experience• Attention to detail• Standards | <ul style="list-style-type: none">• Communication• Digital, Implants, crown & bridge• Prosthetics, vacuum formed• Recommendations• Knowledge & understanding• Patient satisfaction |
|--|---|



IPS e.max®



What is IPS e.max?

IPS e.max® is a Lithium Disilicate glass all-ceramic that delivers optimum aesthetics, translucency, durability and strength. With up to 10 years of clinical evidence, over 80 million restorations and a 97.6% survival rate, it is a proven system that provides highly durable and highly aesthetic restorations, which makes it an affordable alternative to porcelain bonded crowns and zirconia based restorations.

Technical Features:

IPS e.max can either be pressed or milled via our in-house Sirona inLab CAD/CAM milling machine and provides a flexural strength between 360 – 500 Mpa. It is recommended for single unit anterior crowns or posterior crowns, 3 unit anterior bridges, partial and full anatomical crowns, minimal veneers (from 0.3mm), inlays & onlays and screw retained implant crowns.

Clinical Features:

IPS e.max is a bio-compatible material and is used for highly aesthetic solutions due to its true to nature shade behaviour. IPS e.max promotes durable restoration due to the high flexural strength and is suitable with minimal invasive preparations. There is no condensation shrinkage thus providing a precise fit and reduce adjustment time. IPS e.max restorations offer flexible cementation. *Contact Kash on 0208 520 8528 for further information.*



Bremadent
Dental Laboratory

www.bremadent.co.uk - 0208 520 8528

e.max available here