



3 Day Practice....

BPL Managing Director was given the opportunity to have an interview with Dr Aalok Y Shukla a Private Dentist based in London. Throughout this interview Kash and Aalok discuss ways of boosting profits into Dental Practices from Private Prosthetics and the role of Clinical Dental Technicians within the Dental Team click on the link below to view the interview.

To view the interview click on the link
www.the3daypractice.com/cosmetic-tooth-replacement-interview-kash-qureshi/



New Management Team!!

We would like this opportunity to introduce our New Crown & Bridge Manager and Assistant Prosthetics Manager.

Glen has over 25+ Years of experience in Crown & Bridge not only in being a Dental Technician but in Management .

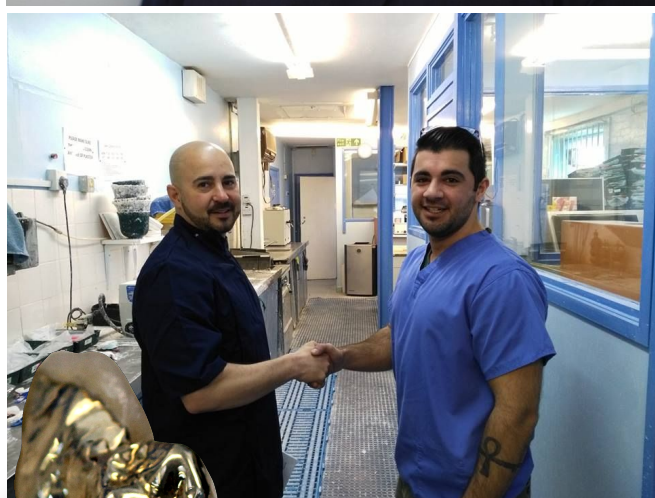
Glen qualified in the U.K and started his apprenticeship under John Gerrard in 1989 and qualified in 1998 (BTEC Dental Technology). He has gained further qualifications in implantology and is Strauman Platinum Accredited.

Glen was trained on the PTC system on metal frameworks, Management, Swissdent Natural Dentures and is also a trained first aider. He works very closely with Dentists on implantology cases whether its fixed or removable and has a appetite for complex cases .

Glen can assist you will all aspects of Metal Frameworks and has a special interest in implantology in Crown & Bridge and Prosthetics.

To view our Management team

<http://www.bremadent.co.uk/our-management-team.html>



Full Metal Crowns "The Gold Standard" @ BPL Dental Laboratory

0208 520 8528 (Guaranteed turnaround ask for more info)





Bremadent on the BBC Really ????

Oh yes... in 2009 the production team from the BBC arrived at our laboratory to ask for some help on a particular event. This was regarding a new show that was going to launch with Mr. Richard Hammond called Engineering Connections. The particular episode was regarding the Sydney Opera House and how Denture adhesives was used in the construction of the Sydney Opera House. To view this section forward to 16 mins onwards to see the section on Dentures (Season 2 episode 2).

The F/F Dentures featured was our very own John Gerrards first ever set of complete dentures for a competition that he had done in the 1960s and yes.... he won it.

This was not the last time we had the BBC at the lab, the second appearance was from the FX team for the tv show called being human, who wanted to learn how we made special effects on removable prosthetics.



Tick, tick ...boom!

You may notice on our Prosthetic docket's there may be a tick next to your written instructions, don't be alarmed this is our way of showing that we are reading through your instructions thoroughly and check the prescription against the product to see everything is exact too what you require!!

Gum shields / Sports Guards = Protection

Gum shields are used to protect the teeth and surround areas whilst sport activity is taken place and comes in a variety of colours, designs, patterns and personal customization of names and logos. All gum shields are safely locked into the bite to aid mandibular stabilisation whilst the patients activity is taken place with our high impact absorbing polymer, the comfort is obtained via our polished and rounded edges and accurate fit from our drawn down pressure of 10 PSI bars. The result is a safe and personalised way for your patients to protect their teeth whilst enjoying their favourite sport.

Technical Features:

All gum shields are at a 5mm thickness and vacuum formed under 10 psi bars of pressure and constructed on the maxillary arch. All peripheral edges are rolled and the gum shields are locked into the lower arch in centric relation. All gum shields are heat treated to maximise the high impact properties.



Call us today on 0208 520 8528 !!
For more info

