

0208 520 8528  
[www.bremadent.co.uk](http://www.bremadent.co.uk)  
[office@bremadent.co.uk](mailto:office@bremadent.co.uk)



"We respect Dentistry, Dental Technology and Science which makes us stand out from our competition"  
*Kash Qureshi, Managing Director*

## Valplast Flexible Dentures

Our Dental Technicians Glen & Agne at 'Bremadent' Dental Laboratory have successfully completed 'Valplast Flexible Partials' Training at the 'Valplast Training Centre' in Worthing with Derren Neve.

Our Managing Director, Kash Qureshi is a Clinical Dental Technician who is an accredited 'Valplast Flexible Dental Technician'. He treats patients for Valplast Flexible Partials in the Swissedent Denture Clinic and manufactures for Dentists in London, Essex and the UK.

Contact us today for more info on 'Valplast Flexible Partials': [www.bremadent.co.uk/prosthetics](http://www.bremadent.co.uk/prosthetics)



## Also...

Our Managing Director and Glen have attended the 3Shape 'Digital' course to go with the new addition of 'Digital Technology' to our 'Dental Laboratory', the new 3Shape Laboratory Scanner.

We have successfully already done a batch of 'Full Zirconia Crowns' and checked under magnification the fit, margins, contacts, occlusion, aesthetics and anatomy.

[www.bremadent.co.uk/digital](http://www.bremadent.co.uk/digital)

## Fun Dental Fact!!!!

Tooth enamel is the hardest substance in the human body. However, we do not recommend that you use your pearly whites to open bottle caps!

# 3shape



## New 'Digital' Technology

Bremadent has now invested into the latest 'Digital' technology available in 'Dentistry'. Our new 3Shape D2000 scanner has now opened our 'Dental Laboratory' to be a 'Digital Dental Laboratory' with the emphasis on providing faster, accurate and consistent results that are cost effective. Turn over for further information.

[www.bremadent.co.uk/digital](http://www.bremadent.co.uk/digital)



Full Zirconia

**'Full Contoured Zirconia Crowns'** are digitally scanned and cad-cam milled and provides less variables and accurate results. Used as an alternative to full metal crowns and is cost effective with no alloy charge. **£90.00**

“The world is facing a new networked, digital lifestyle” and we will ensure that Bremadent remains ahead of the 'Digital Dentistry' game. The aim of 'New Digital Technology' is to provide faster, accurate and consistent results with less variables in 'Everyday Practice' for an 'Integrated Digital Workflow'.

Our new '**Bremadent Digital**' service has the latest 'Digital Equipment' to accommodate 'Digital Dentistry' services from 'Digital Dental Models' to 'Implantology' which are scanned directly from analogue (plaster) models or digitally sent to us from the leading intra-oral scanners from any Dentist around the world instantly (3m, Sirona, Planscan, Trios, Itero, Carestream).

All cases are 'Scanned' and 'Designed' in 3D, which gives accurate and clearly defined parameters with the prepared tooth, margins, contact areas and occlusion captured precisely and locked for the 'Design'. Our technicians will then be able to customise any areas of concern within the parameters and design the restoration with 'Natural Anatomy' from the locked parameters.

A wide range of products is available in 'Crown & Bridge', 'Implantology', 'Prosthetics' and 'Orthodontics' with many restorations being 'CAD/CAM Milled' or '3D printed' once the case has been scanned, designed and approved.

Bremadent 'Digital' is connected directly with Implant systems from Dentsply, Strauman, ETK, Biomet 3, Nobel Biocare, CAMLOG, DIO, Zimmer, Avinent and Atlantis with over 70 implant libraries that allows the Dentist, Dental Laboratory and Implant System to communicate accurately with less variables.

#### **Accuracy of 'Scan':**

With our new 'Digital Scanner' we can scan directly from 'Working Models', 'Analogue Implant Impressions', 'Single or Triple Trays' with one scan without the need to introduce variables e.g expansion rates, human error, chipped or broken teeth etc. The Accuracy is ISO 12836 with 'Crown & Bridge' at 5 microns and 'Implants' at 8 microns.

#### **Accuracy of 'Design':**

Once digitally scanned, the parameters of the prepared tooth, margins, occlusion is defined clearly and the parameters are locked with any areas of concern, customised within the locked parameters. The restoration can then be designed and altered with our 'Natural Anatomy Library' within the locked parameters.

#### **Accuracy of Milled & 3D Printed restoration:**

The parameters of the 'Scan & Design' are locked and cannot be altered further, the restoration is then 'Milled' or '3D Printed' from the locked digital parameters. Once the restoration has been made, It is then fitted to a working model and then further on a solid model to minimize variables. The restoration is then 'Quality Controlled' for fit, aesthetics, occlusion, contact areas and margins.

#### **Indications of use (Scan & Designed) :**

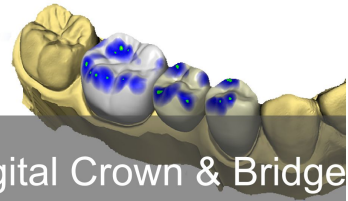
Anterior or posterior single crowns, full contoured crowns, inlays, onlays, veneers, bridges, abutments, implant bars, surgical guides, digital models, digital waxups, cobalt chrome frameworks and orthodontic retainers.

#### **Common materials used for restorations:**

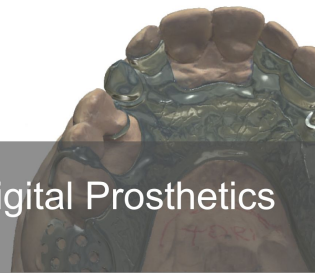
IPS e.max, Zirconia, PMMA, Titanium, Peekton, Cobalt Chrome (CoCr), Non-Precious and Semi Precious alloys.



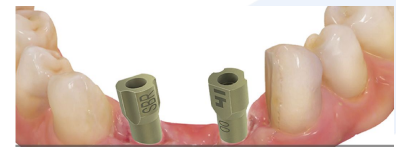
Digital Implantology



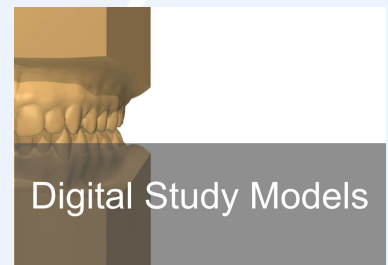
Digital Crown & Bridge



Digital Prosthetics



Digital Impressions



Digital Study Models



Digital

0208 520 8528

[www.bremadent.co.uk](http://www.bremadent.co.uk)  
[office@bremadent.co.uk](mailto:office@bremadent.co.uk)

[www.bremadent.co.uk](http://www.bremadent.co.uk) - 0208 520 8528 – [office@bremadent.co.uk](mailto:office@bremadent.co.uk)



## Needs Your Help!!!

As our valued customers, we need your help. If you're happy with our 'Dental Laboratory', we need you to tell everyone in the form of a review. A few sentences speaks a thousand words.

We are looking for reviews on our 'Dental Laboratory' on either our Facebook or preferably our Google page.

**Please search 'Bremadent' on Google or Facebook to write a review.**

Helpful tips on what to write, taken from published reviews:

- |                                                                                                                                                                                    |                                                                                                                                                                                                                                                       |
|------------------------------------------------------------------------------------------------------------------------------------------------------------------------------------|-------------------------------------------------------------------------------------------------------------------------------------------------------------------------------------------------------------------------------------------------------|
| <ul style="list-style-type: none"><li>• Service</li><li>• Quality of work</li><li>• Customer care</li><li>• Experience</li><li>• Attention to detail</li><li>• Standards</li></ul> | <ul style="list-style-type: none"><li>• Communication</li><li>• Digital, Implants, crown &amp; bridge</li><li>• Prosthetics, vacuum formed</li><li>• Recommendations</li><li>• Knowledge &amp; understanding</li><li>• Patient satisfaction</li></ul> |
|------------------------------------------------------------------------------------------------------------------------------------------------------------------------------------|-------------------------------------------------------------------------------------------------------------------------------------------------------------------------------------------------------------------------------------------------------|







'Valplast® Flexible Partials' is the first flexible partial in the world and has over 60+ years of research and development. It is a 'Nylon' based material, which makes it 100% 'Monomer Free', 'Flexible, Thin, Comfortable' and 'Easy To Adapt To' with a life long guarantee. It's routinely used as an alternative to acrylic partial dentures and is used for one tooth partials to 'Hybrid Cobalt Chrome Partials'.

'Valplast® Flexible Partials' have a unique clasping system, the 'Flexible Clasps' are translucent with natural gingival shades and provides 'Retention' and 'Reciprocation'.

The major connector is designed to sit on the cingulum of the anterior teeth and acts like a 'Occusal Rest', there is also relief on areas around the periphery and bony areas and stops adverse pressure on the, gingiva, gingival tissues or periodontum.

#### **Technical Features:**

'Valplast® Flexible Partials' are nylon base and 100% monomer free, the major connectors has a uniform thickness of 1.5mm which allows for flexibility. The 'Flexible Clasps' are 1mm above the gingival necks of the clasped teeth for aesthetics with 6 translucent gingival shades available. 'Flexible Clasps' are 1mm interdentally between the adjacent tooth and clasped tooth which provides accurate retention and reciprocation. There is 0.5mm of relief around the periphery, clasps and small connectors. The major connector is design to seat on the cingulum areas and acts like an occusal rest. All 'Valplast® Flexible Partials' and 'Flexible Clasps' are surveyed for path of insertion.

#### **Clinical Features:**

'Valplast® Flexible Partials' are easy to adapt to, light weight, thin and flexible which makes them comfortable to wear for the patient. They blend in naturally in the mouth whilst being held firmly and securely with 'Flexible Clasps'. The 'Nylon Material' is flexible and makes the 'Valplast' virtually unbreakable with a 'Life Long Guarantee'.

It is not recommended for complete dentures, gum fitted anterior teeth, over closed OVD (tight occlusion) or small inter-occlusal space.

Contact Bremadent today to discuss your next 'Valplast® Flexible Partials' case.

0208 520 8528

[www.bremadent.co.uk](http://www.bremadent.co.uk)  
[office@bremadent.co.uk](mailto:office@bremadent.co.uk)