

"We respect Dentistry, Dental Technology and Science which makes us stand out from our competition"
Kash Qureshi, Managing Director

Happy New Year 2019!!

Our full service will resume on Thursday **3rd January 2019.**



Do you want to be offer Dental Implants in everyday practice? Do you wonder how the top one percent of Dentists consistently produce implant cases year after year, without stress and whilst maintaining a profitable practice?

Bremadent's Managing Director, Kash Qureshi, in conjunction with Herts Dental Implant Clinic's Principal Dentist, Dr. Ric Dedi, will be holding a course called 'Dental Implants In Everyday Practice'.

Dr. Ric Dedi qualified from the Royal London Hospital in 2004 and holds a Diploma in Conscious Sedation. His practice is limited to implants and full mouth rehabilitation.

Kash Qureshi is a Clinical Dental Technician (Denturist) who oversees and quality controls over 3000+ fixed and removable prosthesis a month. These include implant cases and providing advice to implant surgeons.

Dental Fact:

Dental implants have been around for over 40 years however they really evolved more in the 1980s in general dentistry.

Kash Qureshi says, "I have been looking forward to this collaboration for a while. I have been lucky enough to have done 100's of implant cases by the time I was 21 years old, with the correct protocols and procedures in a controlled environment.

I have worked with Dr. Dedi for over 14 years. We successfully plan the surgical and restorative aspects of implant cases so that the final restorative result is optimal.

We have done many implant cases together, from simple posterior implant cases to very complex full mouth implant cases. We aim to teach Dentists of how restoration of dental implants can be simplified. By adopting a full mouth care approach to patients, Dentists can learn to do complex cases effortlessly".

If you would like enhance your skills with free mentoring from Ric and Kash please call Bremadent on 0208 520 8528



**Celebrating
3 Years of our
monthly
newsletter!
Since 2016**



Case study 2 - Swissdent Style Implant Denture With A Fixed Screw Retained Implant Milled Bar

Presenting Complaint:

Patient has a removable F/F denture and would like implants placed in the maxilla and mandibular for a fixed prosthesis at Herts Dental Implant Clinic in Watford. The patients previous denture was loose, ill fitting and difficult to wear during function. The patient has had X6 OSSTEM® implants placed in the lower arch and the success of the lower arch to determine the upper arch.

Diagnoses:

Bremadent was presented with this case that had X6 OSSTEM® implants placed on various platforms and the patient would like the existing dentures to be copied exactly. We found the reason for the ill fitting dentures was a gradual procedure, as for most dentures wearers, the patient wanted a fixed solution rather than a removable and the only available option was screw retained implant bar dentures.

Treatment Plan:

The treatment plan given was to create a 'Swissdent' style prosthesis and a implant screw retained titanium grade 5 milled bar on the OSSTEM® platform with a mirror polished fit surface. The mirrored fit surface would be 0.3 mm away from the soft tissues to allow for personal hygiene. The implants screw access holes on the LR3,4 would be angled and the screw access on the LR6, LL3,4,6 would be straight for better overall aesthetics. The Swissdent protocols would be used for aesthetics, hygiene and function whilst the screw retained implant milled bar would be used in conjunction for retention and reciprocation to create a aesthetic and functional prosthesis.

We accepted the case and prescribed the following treatment plan :

- Order lab analogues on the OSSTEM® platform X2 Regular 4.5 and X4 Mini 3.5
- Special tray secondary impressions with bite registration
- Try in of prosthesis in wax
- Designed & Milled an Createch implant screw retained titanium grade 5 bar within the parameters of the tryin in wax with a mirrored polish fit surface 0.3mm away from the soft tissues with screw access angled correction of 20 Degrees on the LR3,4
- Order screws for the various platforms with ASA screws for the angled corrections
- Try-in of the implant milled bar with a transfer of the wax try-in on the finished milled bar
- Provide a fixed Swissdent style prosthesis with screw access holes for natural looking aesthetics, hygiene and optimum function



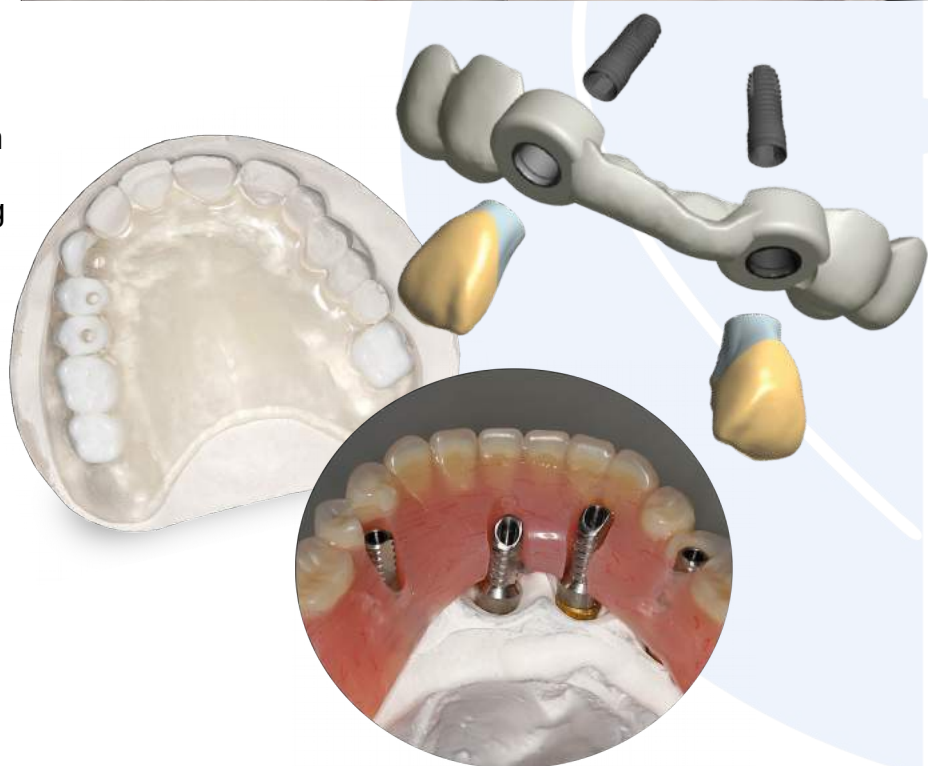
We offer the full range of 'Implant Prosthetics' from 'All on 4/ 6' screw retained implant milled bar prosthetics to removable implant locator retained prosthetics and our newest addition of Immediate/ Delayed Implant Loading All on 4/6 Dentures.

Our Prosthetics department is run by our Clinical Dental Technician Kash Qureshi who also runs the Swissedent Denture Clinic to treat patients for dentures. Kash has an understanding of the clinical and technical aspect of prosthetics by dealing with over 400+ denture related cases weekly and can communicate jargon free clinical support throughout.

He is accredited in 'Valplast' flexible dentures, 'Swissedent Natural Looking Dentures' with a special interest in implantology and has undergone various courses in 'Private Prosthetics', 'Implant Prosthetics' including 'All on 4/6' Immediate Implant loadings, 'Implant Retained Locator, Ball Prosthetics' and 'Implant Bar Dentures'.

We are familiar with key implant systems including Straumann, Nobel Biocare, Dentsply Sirona, Zimmer BIOMET, Bio-Horizons, Ankylos, ETK, Bränemark, Megagen, DIO and CAM LOG with experience in many others implant systems.

We provide 'Radiographic Implant Stents' to create the parameters for planning implant placement by assessing clinical indications and bone levels via a CT scan in relation to the parameters set by the radiographic implant stent. Once planning of the implant placement has been assessed, 'Surgical Guides' are manufactured within the same parameters of the 'Radiographic Implant Stent' to physically place implants calculated accurately. With the use of 'Implant Special Trays' and a 'Verification Jig' it ensures that the impression is accurately representing the implant placements without variables.





We manufacture 'Customized Abutments' to overcome any issues with compromised aesthetic implant replacement and offer a customized 'Zirconia' based two piece abutment system that is milled in our Digital CAD/CAM department with a luted Ti abutment.

We utilize 'Digital Dentistry' technology in designing complex framework bars and screw retained bridges with direct or abutment level connection.

Bremadent Implant Services:

- Implant Screw Retained Milled Bar and Prosthetic
- Implant Screw Retained Milled Bar and Removable Prosthetic
- Implant Locator / Ball Removable Prosthetic
- All on 4 / 6 Immediate / Delayed Implant Prosthetics
- All on 4/6 Immediate Loading Chair-side
- Implant Milled Bar Framework: Telescopic, implant bar, hybrid bar, bar with attachments or abutment hybrid bar suitable for individual crowns to be placed
- Implant Screw Retained Crowns
- Implant Cement Retained Crowns
- Customised Implant Abutments
- Implant Screw / Cement Full Arch Bridges
- Immediate Loading Temporary Crowns
- Digital implant scan & design service



Lab workflow



Receive order



Select implant library



Align scan body with library



Design and produce the restoration



www.bremadent.co.uk



office@bremadent.co.uk



0208 520 8528

