



"We respect Dentistry, Dental Technology and Science which makes us stand out from our competition"
Kash Qureshi, Managing Director

Dental Laboratory Newsletter / Feb 2020

IMPORTANT NOTICE!

We have updated ours 'Terms of Trading' which you can view online (in due course) and on our invoices we send back with finished work (Blue paper). This includes a new financial settlement, late payment interest, re- make policy and quality control which will be effective immediately.

www.bremadent.co.uk/terms--conditions

51 Years trading!

Bremadent Dental Laboratory was established in 1969 and we are celebrating 51 years of business. We would like to thank all of our clients and team members over the years who have worked with us to make Bremadent what it is today!

Bremadent was established in 1969 by John Gerrard and acquired by Kash Qureshi in 2014 as part of an MBO acquisition in conjunction with the opening the 'Swissedent Denture Clinic' to treat patients and assist Dentists with prosthetic cases.

The laboratory started as a crown & bridge one level premises adjacent to the Abbey Dental Practice in Walthamstow, London. Over the years, naturally Bremadent expanded to offer a full service and is now a two storey premises which can house over 30+ employees with an added extension adjacent to the building for our third office, in-house denture clinic, and 12th department.

Our active 'Dental Laboratory' can assist you with all aspects of digital dentistry, implants, CAD/CAM milling, crown & bridge, prosthetics, orthodontics & pressure formed dental appliances. All products are manufactured in-house within a quality controlled environment, with dedicated department managers for a single point of contact.

We have invested in the latest 'Digital Equipment' and 'CAD/CAM Milling' to accommodate 'Digital Dentistry Services' from Dentists around the world using the leading intra-oral scanners (3m, Sirona, Planscan, Trios, Itero, Carestream).

We're familiar with key implant systems including Straumann, Nobel Biocare, Dentsply Sirona, Zimmer BIOMET, Bio-Horizons, Ankylos, ETK, Bränemark, Megagen, DIO and CAM LOG with experience in many others implant systems.

We are officially on the approved list for all of the major 'Dental corporations' in the U.K as a recommended preferred Dental Laboratory. We are DAMAS accredited, MHRA registered and DLA registered.

DO YOU OUTSOURCE!

We have received numerous phone calls in the last week regarding if we outsource our laboratory work overseas due to the current coronavirus outbreak.

We manufacture implant, digital, crown & bridge, prosthetics and orthodontic dental appliances all in-house in London, UK with the exception of Createch in Spain for full arch titanium implant bars.

All materials are sourced from reputable dental companies within the UK.

Dental Fact:

There was over 39.7 million courses of treatment on the NHS delivered between 2018 - 2019.





'Kois Deprogrammers' are used as a diagnostic tool for evaluating patients with occlusal dysfunction, this can cause problems with mastication, facial and joint pain which can lead to worn, broken, loose teeth with frequent chipping due to abnormal occlusal attrition.

A 'Kois Deprogrammer' is a removable, acrylic device that covers the palatal aspect of the maxilla and creates a single point of contact between the anterior bite platform on the upper central and the lower central incisor. This is used to evaluate the patient's bite and assist Dentist's in trying to locate a patient's optimal jaw position or distinguish between the three types of abnormal occlusal attrition – Constricted Path of Closure (PCP), Occlusal Dysfunction and Parafunction (bruxism).



'Kois Deprogrammers' work when the lower central incisors are in contact with the upper anterior bite plane which prevents the mandible and maxilla from occluding thus gradually relaxing the mandible into an ideal position.

This causes the lateral pterygoid muscles to relax and allows the TMJ to seat in its most comfortable and natural position as it removes occlusal interferences and habitual functional movements the patient has developed to avoid pain.

Patients may be asked to wear this device for a period of one week to one month to make sure old muscle memory has been erased (deprogrammed). Signs of successful deprogramming is when the patient has a reproducible bite without assistance as per contact whilst wearing the 'Kois Deprogrammer'.



Michigan and Tanner Splints

'Michigan' and 'Tanner' splints are used for the treatment of dysfunction of the 'TMJ', muscle, control 'Bruxism' and 'Parafunctional' habits. Michigan splints were developed at Michigan University with the aim of creating neuromuscular harmony within the masticatory system to help with reducing parafunctional forces.

The appliance is also called a 'Stabilisation' splint and provides balanced occlusion on the appliance that allows for smooth jaw movement by removing any interferences, and allows the condyles to seat in centric relation. Once balanced and fitted chair side, all of the opposing dentition will occlude with the splint with a bilateral contact of force at the same time, thus reducing the bite force that muscles generate and causing the muscle to relax.

'Michigan' splints are typically constructed on the maxilla and 'Tanner' splints are constructed on the mandible and can be constructed without the need for metal clasping.



Instagram

Follow @bremadent

For the latest up to date information,
images, videos and tips!



www.bremadent.co.uk



office@bremadent.co.uk



0208 520 8528



"The world is facing a new networked, digital lifestyle" and we will ensure that Bremadent remains ahead of the 'Digital Dentistry' game. The aim of 'New Digital Technology' is to provide faster, accurate and consistent results with less variables in 'Everyday Practice' for an 'Integrated Digital Workflow'.

Our new 'Bremadent Digital' service has the latest 'Digital Equipment' to accommodate 'Digital Dentistry' services which are scanned directly from analogue (plaster) models or digitally sent to us from the leading intra-oral scanners from any Dentist around the world instantly (3m, Sirona, Planscan, Trios, Itero, Carestream).

All cases are 'Scanned' and 'Designed' in 3D, which gives accurate and clearly defined parameters with the prepared tooth, margins, contact areas and occlusion captured precisely and locked for the 'Design Process'. Our technicians will then be able to customise any areas of concern within the parameters and design the restoration with 'Natural Anatomy' from the locked parameters.

A wide range of products is available in 'Crown & Bridge', 'Implantology', 'Prosthetics' and 'Orthodontics' with restorations being 'CAD/CAM Milled' or '3D printed'.

Bremadent 'Digital' is connected directly with Implant systems from Straumann, Nobel Biocare, Dentsply Sirona, Zimmer BIOMET, Bio-Horizons, Ankylos, ETK, Bränemark, Megagen, DIO, CAM LOG and Atlantis with over 70 implant libraries that allows the Dentist, Dental Laboratory and Implant System to communicate accurately with less variables.

Accuracy of 'Scan':

With our 'Digital Scanner' we can scan directly from 'Working Models', 'Analogue Implant Impressions', 'Single or Triple Trays' with one scan without the need to introduce variables e.g expansion rates, human error, chipped or broken teeth etc. The Accuracy is ISO 12836 with 'Crown & Bridge' at 5 microns and 'Implants' at 8 microns.

Accuracy of 'Design':

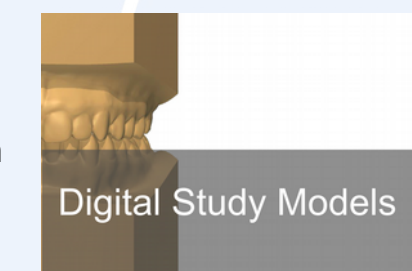
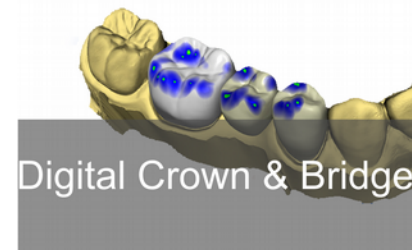
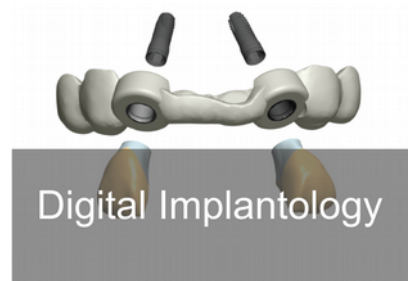
Once digitally scanned, the parameters of the prepared tooth, margins, occlusion is defined clearly in 3D and the parameters are locked with any areas of concern, customised within the locked parameters. The restoration can then be designed with our 'Natural Anatomy Library' within the locked parameters.

Accuracy of CAD/CAM Milled & 3D Printed restorations:

Once the parameters of the 'Scan & Design' are locked they cannot be altered further, the restoration is then CAD/CAM 'Milled' or '3D Printed' from the locked digital parameters. The restoration is then 'Quality Controlled' for fit, aesthetics, occlusion, contact areas and margins via an analogue model or digitally.

Digital Services CAD/CAM restorations :

Anterior or posterior single crowns, bridges, full contoured zirconia crowns, e.max inlays / onlays, veneers, full metal crowns, all ceramic restorations, customised abutments, implant bars, surgical guides, digital models, digital waxups, cobalt chrome frameworks and orthodontic retainers.



Working Times (please do not include collection & delivery, weekends or bank holidays within working times)

Crown & Bridge

Service	Working Days
Executive (Pre-booking only)	3 Days
Private	5 Days
NHS (Standard)	7 Days
Smile Design	5 Days
Implantology	Case dependent

Working Days

Working days are the days spent within the laboratory, please do not include collection & delivery, weekends or bank holidays within the working times.

Express Cases

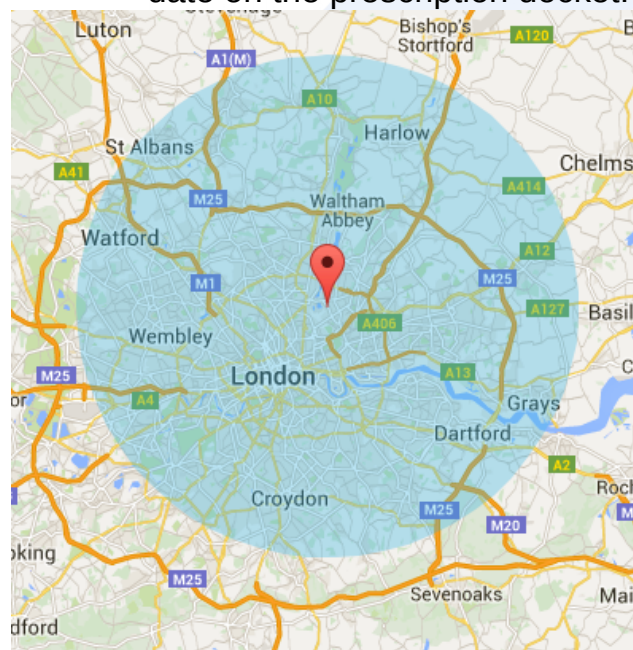
If you require a case to be completed faster than the times quoted, please call or email us first and we will do our best accommodate the case within our workload.

Prosthetic

Service	Working Days
Swissedent (All inclusive)	5 Days
Private	5 Days
NHS (Standard)	7 Days
Additions & Repairs	1 Day
Chrome Framework	10 Days
Implantology	Case dependent

Arranging Collections + Deliveries

To arrange a collection, please call or email us by 5pm prior to the day of collection. All of our drivers leave the premises by 9.30am, any collection requested after this time cannot be guaranteed for the same day. Deliveries cannot be guaranteed for a certain time, please book patients in a day after delivery date on the prescription docket.



Collection & Delivery Service

Our Dental Laboratory operates a free collection & delivery service across Greater London and much of Essex and Hertfordshire (see Photo).

We provide a consistent postal service to areas outside of our collection & delivery areas. To view our collection & delivery radius & print out pre paid labels go to:

www.bremadent.co.uk/downloads

POSTAL SERVICE UPDATE:

Royal Mail have stated the 'Pre-paid' postal service we offer can take up to **10 working days** to deliver. We will still continue to keep this service available to our client on that understanding. We would encourage using a 'Special Delivery' service for next day delivery as this is guaranteed, tracked and signed for.



www.bremadent.co.uk



office@bremadent.co.uk



0208 520 8528

